

# W The Olsen Law Firm IMMIGRATION WATCH

• VOLUME 5  
• JULY/AUGUST 2008

We welcome you to meet the Immis! They help us simplify the immigration process for you. The Immis are in every issue of our newsletter and act as your personal guides to various immigration topics.



## IN THIS ISSUE:



• Board Crossing Update



• Quick Information Bytes



• USCIS Vaccination Requirement and August Visa Bulletin Updates



• Important Web Links



• New Passport Card



• Contact Information



## *Immi, Jr. says:*

Look!! CBP implements new RFID technology for Texas border crossings. Also, the State Department will be incorporating this new technology into the next generation of Boarder Crossing Card as well.

### **CBP IMPLEMENTS RADIO FREQUENCY IDENTIFICATION AT TEXAS BORDER CROSSINGS**

Source: AMERICAN IMMIGRATION LAWYERS ASSOCIATION (AILA)

U.S. Customs and Border Protection will begin deployment of Radio Frequency Identification technology to vehicle lanes at El Paso, Texas border crossings beginning the week of July 28. The RFID technology will speed up travel and further enhance our border security.

The project is expected to last approximately 2 - 3 weeks at each port, with Stanton and Bridge of the Americas slated for the end of July, and Paso del Norte and Ysleta scheduled for mid-August. The second phase of the project is scheduled to begin in early 2009.

“CBP wants to assure travelers that the construction will be performed during non-peak traffic periods to minimize impact on traffic wait times,” said William Molaski, acting El Paso port director. “RFID technology at our land crossings is a major stride to securing our nation and facilitating legitimate travel. We encourage all crossers to obtain one of the RFID-readable documents.”

Use of RFID will enable swifter processing at border crossings for travelers using new state- of-the-art travel documents. These documents include the passport card — a wallet-sized, cost-effective alternative to the traditional passport specifically designed for cross-border land and sea travel — and enhanced driver’s licenses being produced by several states. The state of Washington began producing an enhanced driver’s license in February and currently has issued more than 21,000.

In addition, the State Department will be incorporating RFID technology into next generation Border Crossing Cards. These new cards, which the State Department will begin issuing later this year, will further enhance and streamline border crossing for Border Crossing Card holders.

These documents are the result of a new requirement, the Western Hemisphere Travel Initiative, a Congressional mandate passed in 2004. The requirement went into effect for air travel in January 2007. Full implementation of WHTI for land and sea travel will go into effect June 1, 2009. To help mitigate impact, CBP is taking a phased approach with separate construction and installation phases, which will be complete prior to June 2009. Where possible, construction is taking place during non-peak hours.

The construction is occurring in Blaine, Wash. and Nogales, Ariz. in June, and in the following locations throughout summer and fall: Buffalo, Champlain, Massena and Alexandria Bay, N.Y.; Detroit, Port Huron and Sault St. Marie, Mich.; El Paso, Laredo, Brownsville, Hidalgo, Rio Grande City, Fabens, Progreso, Del Rio, Roma, Presidio and Eagle Pass, Texas; Derby Line, Highgate Springs and Alburg, Vt.; Sweetgrass, Mont.; Calais, Houlton and Madawaska, Maine; International Falls, Minn.; Sumas Point Roberts and Lynden, Wash.; Pembina, N. Dak.; San Ysidro, Andrade, Tecate, Otay Mesa and Calexico, Calif.; San Luis, Douglas and Lukeville, Ariz.; and Columbus, N.M.



***Immi says:***

- Let's take a look at some newest updates:
- 1) USCIS has new vaccination requirements for applicants seeking to adjust status to become legal permanent residents;
  - 2) August 2008 Visa Bulletin.

**USCIS CHANGES VACCINATION REQUIREMENTS TO ADJUST STATUS TO LEGAL PERMANENT RESIDENT**

Source: AMERICAN IMMIGRATION LAWYERS ASSOCIATION (AILA)

U.S. Citizenship and Immigration Services (USCIS) announced a revised list of vaccines required for applicants seeking to adjust status to become legal permanent residents. This revision follows guidance from the Department of Health and Human Services, Centers for Disease Control and Prevention (CDC).

CDC's revised Technical Instructions to Civil Surgeons for Vaccination Requirements require the following age-appropriate additional vaccinations to adjust status to legal permanent resident:

- Rotavirus
- Hepatitis A
- Meningococcal
- Human papillomavirus
- Zoster

The requirements for these new vaccines went into effect on July 1, 2008, however CDC approved a 30-day grace period for any medical exam conducted before August 1, 2008. At that time the new vaccinations, if appropriate, must be administered in order for USCIS to approve the applicant for adjustment of status.

USCIS has revised the Report of Medical Examination and Vaccination Record (Form I-693) to include these new vaccination requirements. The June 5, 2008 edition of Form I-693 must be used for any medical examination completed on or after August 1, 2008.

**VISA BULLETIN FOR AUGUST 2008**

Source: AMERICAN IMMIGRATION LAWYERS ASSOCIATION (AILA)

	All Chargeability Areas Except Those Listed	CHINA-mainland born	India	Mexico	PHILIPPINES
Employment-Based					
1st	C	C	C	C	C
2nd	C	01JUN06	01JUN06	C	C
3rd	<b>U</b>	<b>U</b>	<b>U</b>	<b>U</b>	<b>U</b>
other workers	<b>U</b>	<b>U</b>	<b>U</b>	<b>U</b>	<b>U</b>
4th	C	C	C	C	C
Certain Religious Workers	C	C	C	C	C
5th	C	C	C	C	C
Targeted Employment Areas/Regional Centers	C	C	C	C	C



## *Citizen Immi says:*

U.S citizen travelers, you can apply for a new Passport Card now. Remember, it is only valid for travel between the United States and Mexico, Canada, the Caribbean, and Bermuda.

### **JOINT ANNOUNCEMENT FROM THE U.S DEPARTMENTS OF STATE AND HOMELAND SECURITY ON PASSPORT CARD PRODUCTION**

Source: **AMERICAN IMMIGRATION LAWYERS ASSOCIATION (AILA)**

The U.S. Department of State and the U.S. Department of Homeland Security (DHS) announced that the new U.S. Passport Card is in full production and is now being distributed. The Passport Card is a convenient, wallet-sized document for land and sea travel between the United States and Mexico, Canada, the Caribbean, and Bermuda. It is not valid for international travel by air.

Beginning in June 2009, travelers will be required to present a single Western Hemisphere Travel Initiative-compliant document denoting both citizenship and identity when entering the United States through a land or sea border.

More than 350,000 Americans pre-ordered the U.S. Passport Cards since the State Department began taking orders on February 1. Over 7,600 cards have already been mailed to advance customers, and all pre-orders are expected to be filled by September 30, 2008. After that initial distribution, the processing time for passport cards should be the same as for passport books – less than four weeks. Customers will be able to track the progress of their passport card application online beginning in mid-August.

The passport card will facilitate the frequent travel of Americans living in border communities by utilizing a vicinity-read radio frequency identification (RFID) chip. With this technology, DHS' U.S. Customs and Border Protection officers will be able to access photographs and other biographical information stored in secure government databases before the traveler reaches the inspection booth so that inspection can be facilitated.

For privacy protection, no personal information is stored on

the electronic chip itself. The chip will have only a unique number pointing to a stored record contained in secure government databases.

“We are pleased to offer Americans a choice of documents, the traditional passport book, and now the passport card, to meet their personal needs for international travel,” said Assistant Secretary of State for Consular Affairs Janice L. Jacobs. “The passport card is the newest addition to the Department’s long history of providing secure, reliable services to the American traveling public.”

“We have been working closely with the U.S. Department of State to be able to provide another type of secure identification that is vital to protecting our nation’s borders” said Homeland Security Assistant Secretary for Policy Stewart Baker. “The new passport cards will help facilitate legitimate travel while allowing our frontline personnel to focus more on those who may pose a threat.”

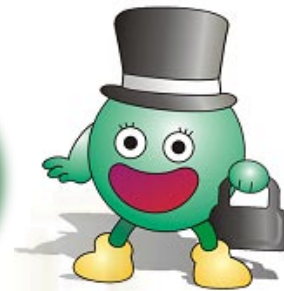
The Passport Card is available for \$45 for first-time adult applicants and \$35 for children under 16. Adults who currently have valid passports can apply for the passport card by mail for \$20.

## QUICK INFORMATION BYTES

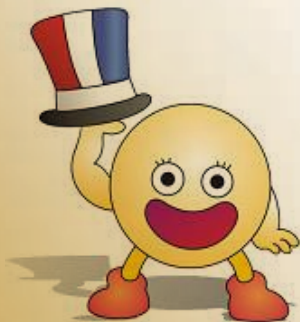


***Immi, Jr. says:*** F-1s in undergraduate study, don't forget school is getting ready to start and you need to make sure you have registered for at least 12 credit-hour classes.

***Immi says:*** Please remember that in order to be employed in the U.S. by a U.S. employer the employee must complete Form I-9.



***Citizen Immie says:*** Please note that a naturalization oath ceremony may take between three to four hours to complete.



## QUESTIONS AND ANSWERS

### *Explanation:*

If you have questions concerning immigration related issues or concerns and are of a non-advice and pure general interest nature, please e-mail them to [tolsen@tlolaw.com](mailto:tolsen@tlolaw.com)

## IMPORTANT IMMIGRATION RELATED WEB SITES

- US Citizenship and Immigration Services  
<http://www.uscis.gov/portal/site/uscis>
- Department of Labor  
<http://www.dol.gov/>
- Department of State  
<http://www.state.gov/>
- Embassies in Washington D.C.  
<http://www.embassy.org/>
- Visa Bulletin  
[http://travel.state.gov/visa/frvi/bulletin/bulletin\\_1360.html](http://travel.state.gov/visa/frvi/bulletin/bulletin_1360.html)



OLSEN LAW FIRM

Attorney: Terrence L. Olsen, Esq.  
E-mail: [tolsen@tlolaw.com](mailto:tolsen@tlolaw.com)  
Web site: [www.tlolaw.com](http://www.tlolaw.com)  
Phone: (423) 648-9390  
(423) 648-9370 (for Chinese and Taiwanese language assistance)  
Fax: (615) 250-4904

#### **Disclaimer**

OLSEN LAW FIRM provides the information on these pages as a public service, free of charge. Information contained on these pages is not intended as, and should not be taken as, legal advice. The use of information provided on these pages should not be taken as establishing any contractual or other form of attorney-client relationship between OLSEN LAW FIRM and the reader or user of this information.

While we would like to hear from you, please understand that merely contacting us does not create an attorney-client relationship between us. We cannot represent you or become your lawyers in any way unless (1) we know that doing so would not create conflict of interest with any of the clients we currently represent or have represented in the past and (2) satisfactory arrangements have been made between us for our representation.

While we have provided links to other World Wide Web sites, we cannot be and are not responsible for the contents of these other sites. We expressly disclaim any liability with respect to actions taken or actions not taken based on content received from a third-party web site linked, directly or indirectly, to the OLSEN LAW FIRM web site.

The link to another site is not to be construed in any way as an endorsement of the host, the site, or the information contained therein, nor is such link to be inferred as an association or affiliation with the host.

Listing of related or included practice areas herein by individual attorneys or by OLSEN LAW FIRM does not constitute or imply a representation of Certification of Specialization.

Immi, Jr., Immi, and Citizen Immi © 2002 by Terrence L. Olsen